



Redefining handheld reality capture

NavVis MLX is a user-friendly, handheld dynamic scanning system that enhances AEC and surveying workflows. As a compact device, ideal for confined, smaller spaces or shorter, more frequent scanning on site, it is a professional solution that delivers the accuracy and data quality you and your clients require.

NavVis MLX

Redefining handheld reality capture

Agile reality capture

Capture 3D measurements with a 32-layer lidar sensor in combination with industry-trusted SLAM software augmented by Visual Odometry (VO) to deliver exceptional point cloud quality for a handheld device. Four cameras positioned on top of the system take high-resolution 270° images when resting on the harness and 360° images when lifted above the head.

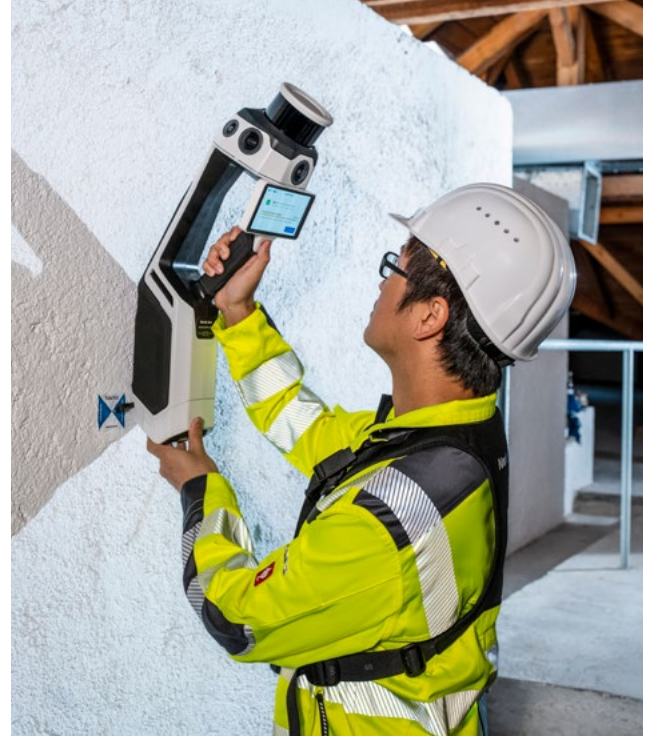
Live scanning feedback

Monitor your scanning progress in real time with a built-in touchscreen interface, to ensure complete coverage as you move.

Handheld redefined

NavVis MLX is a one-of-a-kind, compact, handheld device designed for optimal functionality and comfort. Featuring a supporting harness for added comfort, it enables operators to scan as they walk and maneuver freely, ensuring optimal coverage in compact or narrow spaces. Its sleek design fits easily into a backpack, allowing a single operator to transport and set up the system on the go. Comes fully equipped with:

- Easy-grip handle for free movement
- Built-in screen
- Supporting harness
- Flat-sided for stable placement on surfaces



Geo-registration

NavVis MLX takes your AEC and survey workflows to the next level. It's fully compatible with standard tools in the field and can capture control points measured by Total Stations and GNSS rovers. It supports alignment of datasets as well as national and global coordinates for geo-registration.

Limitless mobility

With multiple methods of transporting NavVis MLX, moving around and between sites has never been simpler. A comfortable yet sturdy backpack allows you to move to and from your site with ease and can even be carried as hand luggage on flights. The backpack fits snugly into a protective, hard-shelled case on wheels enabling rail travel and check-in air travel for longer distances.



Agility meets data quality

NavVis MLX offers an unrivalled combination of agility, ergonomics, and outstanding data quality from a handheld device. It seamlessly integrates into AEC, surveying, and reality capture workflows both on-site and in-office. An expertly engineered pairing of hardware and software, NavVis MLX delivers comfort and precision in one compact device, excelling in confined or complex environments. For projects requiring swift data capture at exceptional standards, NavVis MLX serves as your steadfast partner in the field and on the go.

Professional simplicity

A professional-grade tool, designed for seamless accessibility by users of all skill levels. Intuitively engineered, NavVis MLX is an adaptable device that empowers everyone on your team to leverage the benefits of reality capture technology at the highest level.

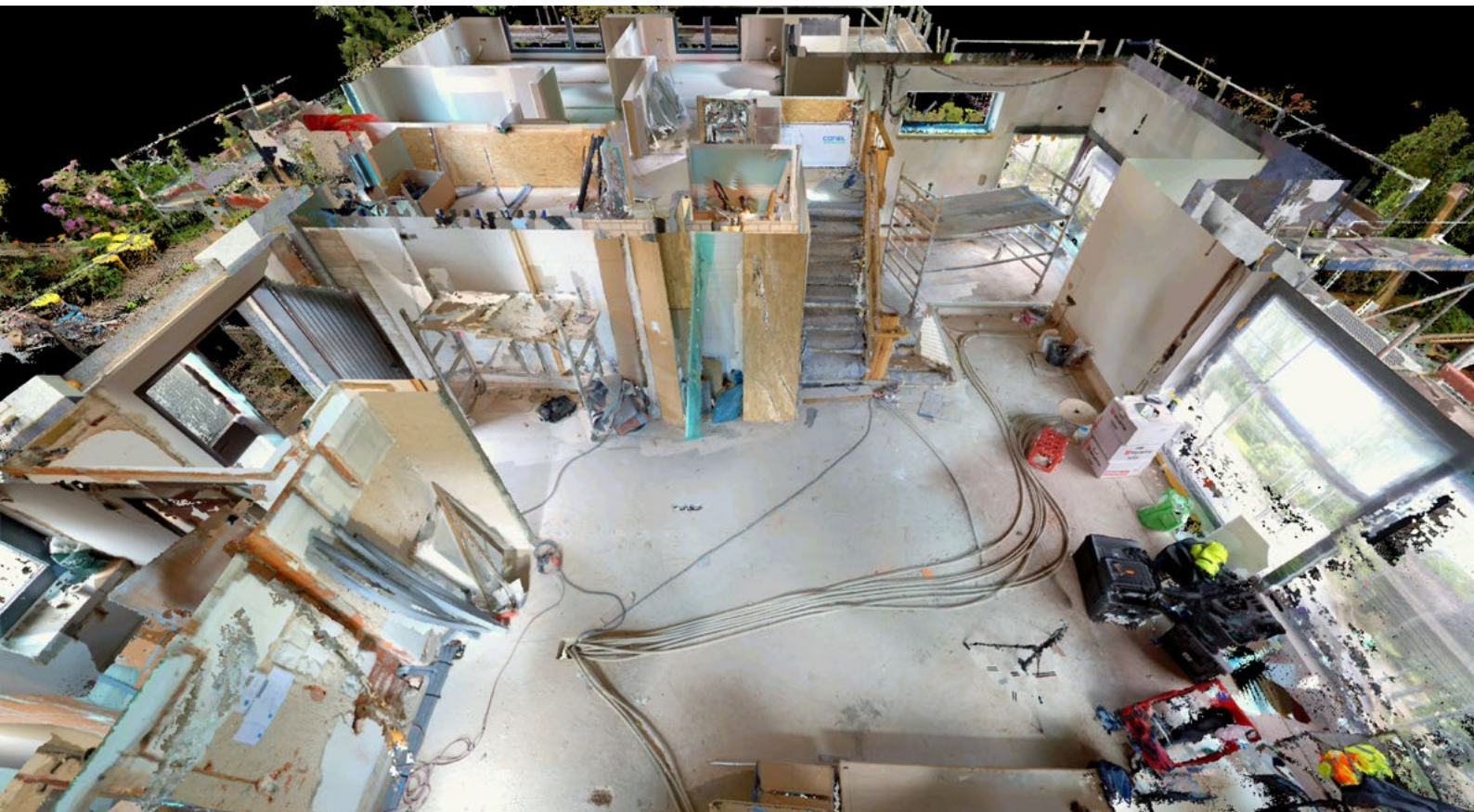
End-to-end reality capture solution

NavVis MLX is a more affordable, versatile device optimized to seamlessly work hand-in-hand with NavVis VLX in the field and NavVis IVION in the office. Reduce effort and cost of immediate access to reliable as-is and as-built data. This combination offers an end-to-end reality capture solution suitable for various applications and tailored to empower your stakeholders throughout the workflow.

Ground-breaking innovation

Differentiate yourself from competition and win more projects with uniquely innovative technology that goes beyond traditional workflows. Stand out from the crowd with device that boosts efficiency and exceeds client expectations — all without compromising quality.


highly-detailed reality capture





BUILD BETTER REALITY

Bridge the gap between the physical and digital worlds through reality capture technology that provides the digital foundation for the world you want to live in.

[Book a demo](#) 

See for yourself how NavVis technology can seamlessly integrate into your workflow.